



FOR PRIVATE CIRCULATION ONLY.

3 February 2012

Jeera

Contract	Open	High	Low	Close	△	Close
Feb-12	14400	14539	14173	14307		-148
Mar-12	14750	14850	14493	14631		-136
Apr-12	15129	15190	14864	14931		-206

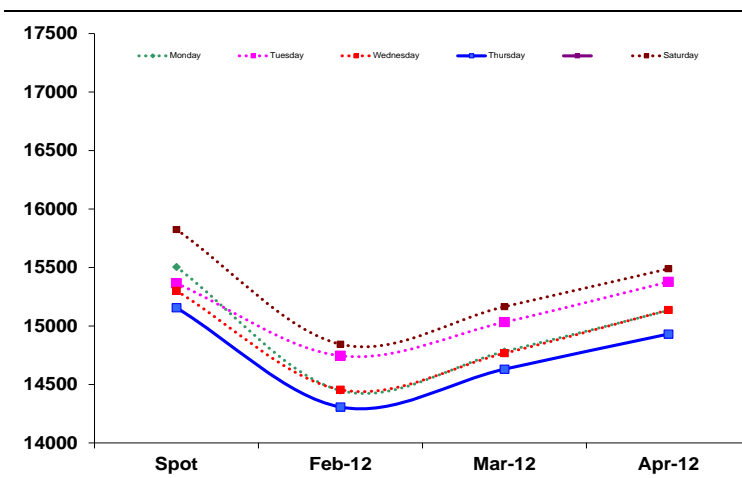
Contract	Vol (MT)	△ Vol	OI	△ OI
Feb-12	9006	132	10536	-732
Mar-12	3246	-144	11721	159
Apr-12	939	-159	3804	237

Spread	Feb-12	Mar-12	Apr-12
Spot	-849	-525	-225
Feb-12		324	624
Mar-12			300

Centre	Spot Rs./Qtl	Change
Unjha	15155.6	-144.4

Source: NCDEX

Forward Curve - Jeera



Stocks in NCDEX	Demat	In Process
Jodhpur	448	0
Unjha	6783	263
Total	7231	263

- Jeera prices declined overnight on profit booking at the future counter
- Declining prices with declining open interest indicates long liquidation for February contract
- Higher stocks in exchange warehouses with expiry of around 1620MT in February contract can cap the upside
- Gujarat rabi Jeera acreage 368,000 hectares compared with 245,000 hectares last year (Jan 16)
- Export in November were of 6000MT, April – Nov at 26500MT in 2011-12 compared to 20750MT last year

Cumin seed price declined by Rs 145 per quintal as per NCDEX spot prices. Domestic demand continued to be slow at Unjha market. Weak export demand also increased selling pressure on Jeera futures.

Cumin seed rough quality offered at Rs 1,575-1,675 per 20 kg, foreign quality at Rs 2,550-2,650, NCDEX quality at Rs 2,775-2,875 per 20 kg. Arrival stood at 3,000 bags and around 3,000 bags traded.

Traders are buying NCDEX stocks and selling it in the spot market at Rs 14850-14900 per quintal. Stocks has declined in last few days as demand from Bangladesh prevailed in the spot market. In the international market, Syrian and Turkey's cumin seed offered at USD 3,200 per ton (fob), while, Indian cumin seed quoted at USD 2,850 per ton (cnf) Singapore.

Forward Curve

Forward curve has shifted on the right side on profit booking. Slope of the curve has steepened compared to yesterday.

Outlook & Strategy

Jeera prices at the futures counter are expected to extend weak undertone. FED stocks of 1620 MT are due to expire in February which can weigh on the prices. Also putting pressure to the prices are reports of higher acreage data. For intraday the outlook is negative. NCDEX February contract can test the support of Rs.14100-14150 with resistance being Rs 14500-14600.

Pepper

Contract	Open	High	Low	Close	△ Close
Feb-12	29400	30275	29305	29500	110
Mar-12	29750	30595	29675	29845	60
Apr-12	30205	30885	30120	30235	35
May-12	30500	31035	30300	30620	280
Jun-12	31200	31400	30405	30820	190
Jul-12	31690	31690	30350	30855	-180

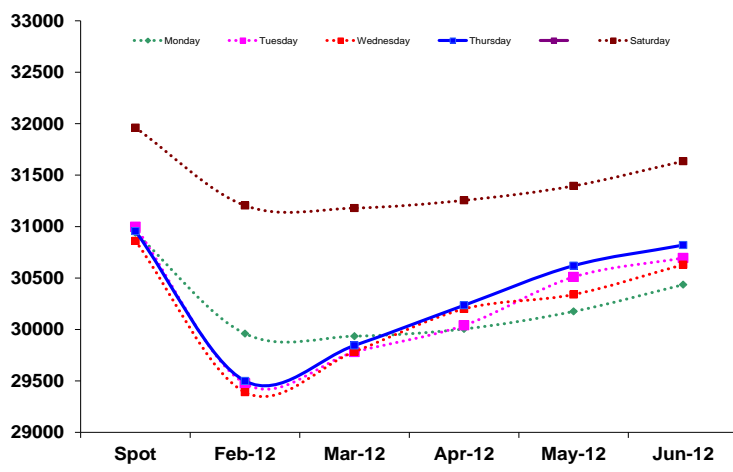
Contract	Vol (MT)	△ Vol	OI	△ OI
Feb-12	2763	-353	4793	-1149
Mar-12	843	-190	2340	-22
Apr-12	334	89	557	-22
May-12	129	50	373	-11
Jun-12	34	5	267	12

Spread	Feb-12	Mar-12	Apr-12	May-12	Jun-12
Spot	-1455	-1110	-720	-335	-135
Feb-12		345	735	1120	1320
Mar-12			390	775	975
Apr-12				385	585
May-12					200
Jun-12					35

Centre	Spot Rs./Qtl	Change
Kochi	30955.2	94.1

Source: NCDEX

Forward Curve-Pepper



Stocks in NCDEX	Demat	In Process
Kochi	3872	0
Calicut	99	10
Total	3971	10

- Pepper futures traded firm on overnight profit booking at the future counter
- Short liquidation featured in benchmark February contract with low volumes
- Basis narrowed to -1455 from Rs -1471 in last session
- FED stock of 1120MT will expire in February contract
- **Exports in November was 3250MT, April- Nov at 17000MT in 2011-12 compared to 11850MT in last year**

Black pepper at the spot market gained by Rs.94 per quintal in tandem with the futures counter. Black pepper un-garbled quoted at Rs 29900 per quintal and MG-1 at Rs 30,900 a quintal. Indian parity in the international market was at \$6,400 a tonne (c&f) for Europe and \$6,700 a tonne (c&f) for US. A strong INR against the dollar has evaded the fall in the Indian pepper market.

Pepper prices, which posted strong gains in the past two years, will remain firm this year due to prolonged global supply shortfall according to Malaysian Pepper Board (MPB).

MPB stated that based on the International Pepper Community's (IPC) 2012 forecast, world production this year would increase by 21,755 tonnes or 7.3% to 320,155 tonnes from 298,400 tonnes in 2011. The world's consumption was projected to grow by 7,550 tonnes to 371,000 tonnes from 363,450 tonnes last year. There will be a projected global shortfall of nearly 51,000 tonnes this year.

Forward Curve and Spread

The forward curve has once again turned to deep contango as new crop arrivals are putting pressure on prices. Prices in the spot market are trading at Rs 1500 per quintal higher than February contract. This can lead to the basis narrowing down in the near term.

Outlook & Strategy

Pepper prices at the futures counter are expected to extend weak undertone. New crop arrivals will weigh on the prices. Outlook for the day is negative. We expect NCDEX February contract to test the support of Rs 29000-28700 with resistance being Rs 30000-30500.

Turmeric

Contract	Open	High	Low	Close	Δ	Close
Apr-12	4700	4730	4570	4614	-90	
May-12	4490	4544	4444	4464	-64	
Jun-12	4520	4560	4458	4458	-90	

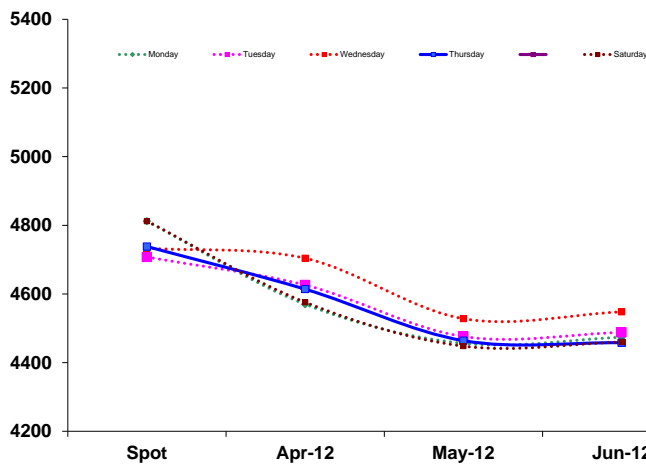
Contract	Vol (MT)	Δ Vol	OI	Δ OI
Apr-12	4245	-1145	10055	-450
May-12	1060	-845	4730	-35
Jun-12	195	-310	1255	70

Spread	Apr-12	May-12	Jun-12
Spot	-124	-274	-280
Apr-12		-150	-156
May-12			-6

Centre	Spot Rs./Qtl	Change
Nizamabad	4738.1	4.75

Source: NCDEX

Forward Curve-Turmeric



Stocks in NCDEX	Demat	In Process
Erode	0	0
Cuddapah & Duggirala	0	0
Nizamabad	0	0
Sangli	0	0
Warangal	0	0
Total	0	0

- Turmeric futures traded weak on overnight profit booking by traders
- Overall the change in close price and open interest indicated long liquidation with lower volumes
- Basis has narrowed to Rs -124 compared to Rs -29 in previous session
- **Exports in November were 8000MT, April - Nov at 58000MT in 2011-12 compared to 35500MT last year**

Turmeric prices quoted higher in Nizamabad and other centers on domestic demand from North India and stockiest buying for the new crop.

At Sangli, Rajapuri powder quality was available at Rs. 5,500-5,800 per quintal, rajapuri powder medium quality at Rs. 6,300-6,500 per quintal and desi cudappah at Rs. 5,000-5,200 per quintal. 4000 bags were traded.

At Nizamabad unpolished finger variety offered at Rs 5,000 per quintal and gutta at Rs. 4,500 per quintal. Trade of 6,000 bags was reported at Nizamabad.

Turmeric Kisani variety in Erode priced at Rs. 5,200 per quintal and Salem variety at priced at Rs. 5,600 per quintal. Supply of 10,000 bags was reported at Erode market.

Exporters purchased new crop, which has increased by Rs 200 a quintal. The old crop was sold to a minimum fetched Rs 100 a quintal more than previous price. Traders have quoted high price to fulfill their committed orders to Masala firms.

Forward Curve

The forward curve is in backwardation ahead of higher supplies in the future, but with higher acreage we expect the May contract to convert to contango in the coming session.

Outlook & Strategy

Turmeric prices are expected to extend losses on expectation of higher crop in the new season. Basis is expected to narrow in the coming session. Lower arrivals and domestic buying can keep a check on major decline in price. Outlook for the day is negative. NCDEX April contract can test the support of Rs.4550-4500 with resistance being Rs.4800-4825.

Dhaniya

Contract	Open	High	Low	Close	△	Close
Feb-12	3760	3910	3760	3808		-34
Mar-12	3953	4060	3930	3973		-13
Apr-12	4083	4165	4044	4103		6

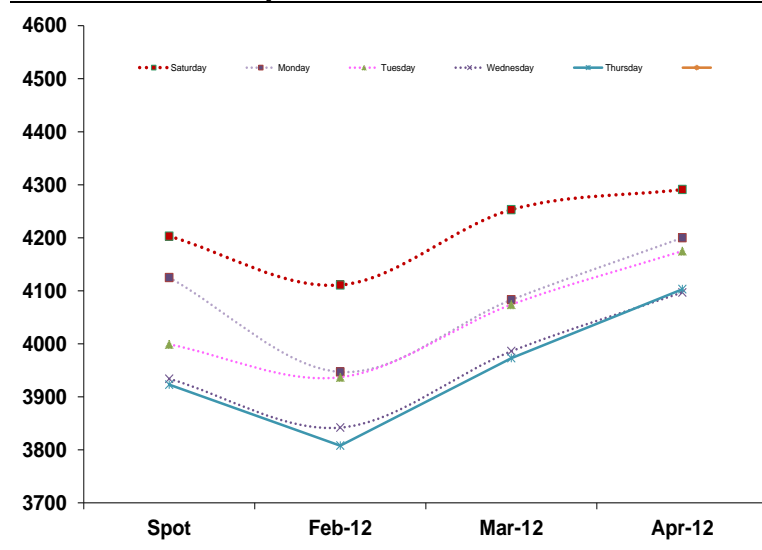
Contract	Vol (MT)	△ Vol	OI	△ OI
Feb-12	6010	1560	14130	-1140
Mar-12	4550	1380	8500	370
Apr-12	1050	300	1270	-150

Spread	Feb-12	Mar-12	Apr-12
Spot	-115	50	180
Feb-12		165	295
Mar-12			130

Centre	Spot Rs./Qtl	Change
KOTA	3923	-11

Source: NCDEX

Forward Curve-Dhaniya



Stocks in NCDEX	Demat	In Process
Jaipur & Guna	4722	0
Kota	25705	20
Ramgunjmandi	4223	0
Total	34650	20

- Dhaniya prices at the exchanges traded weak on overnight profit booking
- We witnessed Long liquidation for the benchmark February contract traded at NCDEX with higher volumes
- Dhaniya spot prices declined by Rs 11 per quintal at Kota
- **Around 11800MT will expire in February contract**
- **Exports in November were 2200MT, April – Nov at 18200MT in 2011-12 compared to 30645MT last year**

Coriander traded down by Rs 11 at Kota Mandi on selling pressure at the future counter.

At Kota, Badami loose new quoted at Rs. 3,000 per quintal, eagle loose at Rs. 3,100-3,200 per quintal. Cold storage scooter variety sold at Rs. 4,400-4,500 per quintal.

Coriander arrival at Kota was 4,000 bags, 3,500 bags in Baran market, 3,500 bags in Ramganj market, 2,500 bags in Guna market and 2,000 bags in Kumbhraj market (each bag=40 kg).

Though future prices are quoting lower, arrival in the spot market has waned on lower spot prices.

Forward Curve

The basis has widened to -115 from Rs -92 on higher FED stocks. Forward curve has steepened as prices declined in the spot market. Curve has turned in deep contango in previous session.

Outlook & Strategy

Dhaniya prices are expected to trade weak during the session on selling pressure at higher levels. The expiry of more than 11800MT in February contract can put pressure on prices along with sluggish domestic demand for the spice. Outlook for the day is negative. NCDEX February contract can test the support of Rs.3700-3675 with resistance being Rs.3950-4050.

Chilli

Contract	Open	High	Low	Close	△	Close
Feb-12	6020	6042	5972	5992		-42.00
Mar-12	5808	5808	5694	5730		-48.00
Apr-12	5844	5938	5844	5878		-60.00

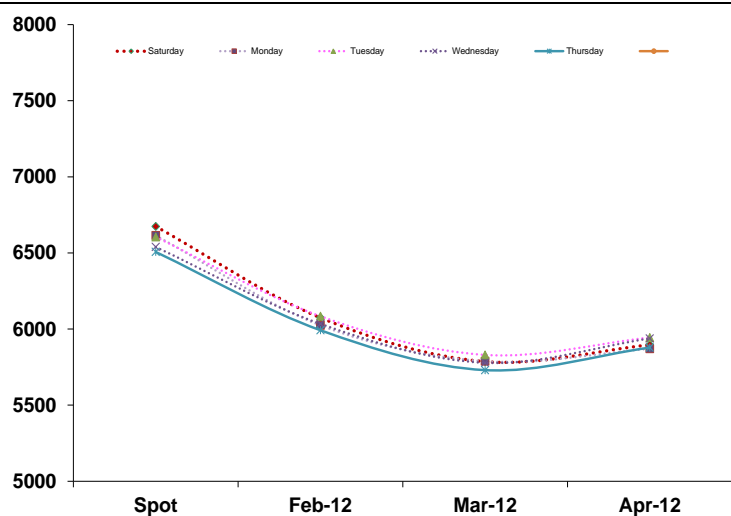
Contract	Vol (MT)	△	Vol	OI	△	OI
Feb-12	530		135	2395		-55
Mar-12	230		25	1560		10
Apr-12	75		-30	940		15

Spread	Feb-12	Mar-12
Spot	-514	-776
Feb-12		-262
Mar-12		

Centre	Spot Rs./Qtl	Change
Guntur	6506.2	-32.6

Source: NCDEX

Forward Curve-Chilli



Stocks in NCDEX	Demat	In Process
Guntur	0	0
Warangal	0	0
Total	0	0

- Chilli prices closed down on overnight profit booking
- We witnessed liquidation of long positions for the February contract traded at NCDEX
- Overall the participation lacked luster amid decline in volume of trade
- Spot prices were marginally down by Rs 33per quintal
- Exports in November were 22500MT, April – Nov at 132500MT in 2011-2012 compared to 173500MT last year

Red chilli remained steady on dull demand at Guntur market of Andhra Pradesh on Thursday. Red chilli futures quoted down on profit taking. Total arrival of new red chilli reported around 35,000-40,000 bags. On the export front, some enquiries are being prevailed from Malaysia Sri Lanka and Bangladesh.

At Guntur cold storage red chilli teza variety quoted at Rs 6,000-6,500 per quintal, Indo-5 at Rs 6,000-6,500 per quintal, 334 quality at Rs 5,500-6,000 a quintal, 273 quality at Rs 4,500-5,100 per quintal, 334 phataki at Rs 2,700-3,300 per quintal. It is likely that red chilli production in Andhra Pradesh will be around 1.75 crore bags (40 kg) in this season.

Chilli prices are expected to weaken once the new arrival starts in March and April. Chilli production is expected to be higher at 12 lakh tonnes compared to the crop was estimated at 8 lakh tonnes last year.

Forward Curve

No major change in the forward curve. Basis also continued to move in a range.

Outlook & Strategy

Chilli prices are expected to trade with a downward bias during the session. Expectation of new crop arrivals can weigh on the prices along with subdued domestic demand. Price outlook for the day is negative. We expect NCDEX February contract to test the support of Rs.5900-5850 with resistance being Rs 6100-6150.

Prerana Desai
Vice President- Research
prerana.desai@kotakcommodities.com
+91-22-66528894

Dharmesh Bhatia
AVP Research- Technical Analyst
dharmesh.bhatia@kotakcommodities.com
+91-22-66528846

Faiyaz Hudani
Sr. Research analyst- Spices, Edible Oil
faiyaz.hudani@kotakcommodities.com
+91-22-66528837

Amit Sajeja
Sr. Research analyst- Technical Analyst
amit.sajeja@kotakcommodities.com
+91-22-66528847

Sudha R. Acharya
Research analyst- Edible Oil, Pulses, Grains
sudha.acharya@kotakcommodities.com
+91-22-66528809

Ajay Baheti
Associate Research- Technical Analyst
ajay.baheti@kotakcommodities.com
+91-22-66528845

Madhavi Mehta
Research analyst- Energy, Bullion
madhavi.mehta@kotakcommodities.com
+91-22-66528809

Priyanka Jhaveri
Research analyst- Base Metals
priyanka.jhaveri@kotakcommodities.com
+91-22-66528848

Disclaimer

This document is not for public distribution and has been furnished to you solely for your information and must not be reproduced or redistributed to any other person. Persons into whose possession this document may come are required to observe these restrictions.

This material is for the personal information of the authorized recipient, and we are not soliciting any action based upon it. This report is not to be construed as an offer to sell the solicitation of an offer to buy any commodity or commodity derivative in any jurisdiction where such an offer or solicitation would be illegal. It is for the general information of clients of Kotak Commodity Services Limited. It doesn't constitute a personal recommendation or take into account the particular investment objectives, financial situations, or needs of individual clients.

We have reviewed the report, and in so far as it includes current or historical information, it is believed to be reliable though its accuracy or completeness cannot be guaranteed. Neither Kotak Commodity Services Limited, nor any person connected with it, accepts any liability arising from the use of this document. The recipients of this material should rely on their own investigations and take their own professional advice.

Price and value of the commodity referred to in this material may go up or down. Past performance is not a guide for future performance. Certain transactions-including those involving commodity derivatives involve substantial risk and are not suitable for all investors. Reports based on technical analysis centers on studying charts of a commodity's price movement and trading volume, as opposed to focusing on a commodity's fundamentals and as such, may not match with a report on a commodity's fundamentals.

We do not have any information other than information available to general public. The report is based on information from sources like respective industry associations, FICCI, CII, companies, media and other public sources. Opinions expressed are our current opinions as of the date appearing on this material only. While we endeavor to update on a reasonable basis the information discussed in this material, there may be regulatory, compliance, or other reasons that prevent us from doing so. Prospective investors and others are cautioned that any forward-looking statements are not predictions and may be subject to change without notice. Our proprietary trading may make trading decisions that are inconsistent with the recommendations expressed herein.

We and our affiliates, officers, directors, and employees worldwide may: (a) from time to time, have long or short positions in, and buy or sell the commodities mentioned herein or (b) be engaged in any other transaction involving such commodities and earn brokerage or other compensation or act as a market maker in the commodity/(is) discussed herein or have other potential conflict of interest with respect to any recommendation and related information and opinions.

The analyst for this report certifies that all of the views expressed in this report accurately reflect his or her personal views about the subject commodity and no part of his or her compensation was, is or will be, directly or indirectly related to specific recommendations or views expressed in this report.

No part of this material may be duplicated in any form and/or redistributed without Kotak Commodity Services Limited's prior written consent.

Registered Office: Kotak Commodity Services Ltd., Nirton house, 1st Floor, Dr. Annie Besant Road, Opp. Sasmira, Worli, Mumbai - 25